

Port Clarence Landfill Time Extension Approved

Last year Augean applied to Stockton Borough Council to extend the life of the Port Clarence Landfill, as the permitted planning consent was due to end in 2016. The application has now been approved by the Council so that the time of operation is now linked to the remaining capacity of the site; however, the area of the landfill itself has not been altered.

The site gives pivotal support to many other waste management facilities and businesses on Teesside and provides a local, regional and national facility for the disposal of both hazardous and non-hazardous waste.

Also located adjacent to the Port Clarence Landfill is the complementary Waste Recovery Park, where waste materials are efficiently recycled, recovered and reused through an integrated range of innovative hazardous waste technologies. This ensures that as little as possible non-recoverable waste residue goes into the nearby landfill.

Recharging Battery Recycling

The UK Waste Battery Regulations now in force have increased the volume of battery waste required to be recycled. The regulations also require a greater collection rate to reduce the several thousand tonnes of potentially harmful battery waste going into landfill. Although there has been an increase in the number of shops and supermarkets with old battery collection points, the UK has no processing facilities for non-lead acid portable battery waste, so all the non-lead batteries collected are exported for recycling and recovery of materials. A more economic process is needed in the UK to reduce landfill and recover valuable materials. A Technology Strategy Board funded project called ReCharge was established to address this.

The project consortium has been led by Augean to develop a range of metal recovery processes from various waste sources. Initial development work was carried out by the Centre for Process Innovation (CPI), the UK's leading provider for technology development in Industrial Biotechnology and Biorefining. These activities were supported by G&P Batteries, a leading battery collection company, and International Innovation Technology Ltd, who have developed novel grinding and classification technologies.

ReCharge has looked at and compared new biotechnology processes and chemical methods to extract the metal from various portable battery types in a cost effective and environmentally sound way. The project initially investigated cultivating and optimising the growth of specialist microorganisms to recover metals through bioleaching. The final process developed can extract high purity (99.9 per cent) metal oxides that can be re-used from high metal content wastes. The process is also more competitive as it uses less energy than current technologies.



Aerial view of Port Clarence

Helping People Back to Work in Paisley

Augean Paisley has joined forces with Learn Direct (an integrated employability and skills providers) to offer Community Work Placement Contracts in conjunction with Jobcentre plus.

From the end of June, Paisley will offer placement opportunities to two local people for a period of four weeks. The placement needs to be of benefit to the local community and will not replace a paid position within Augean. As a host organisation Augean will be giving a jobseeker the opportunity to improve their confidence and gain valuable skills to make it easier for them to get back into work – helping to strengthen the economy in the local area and the relationship between Augean and the local community in which it operates.



ENRMF Open Day

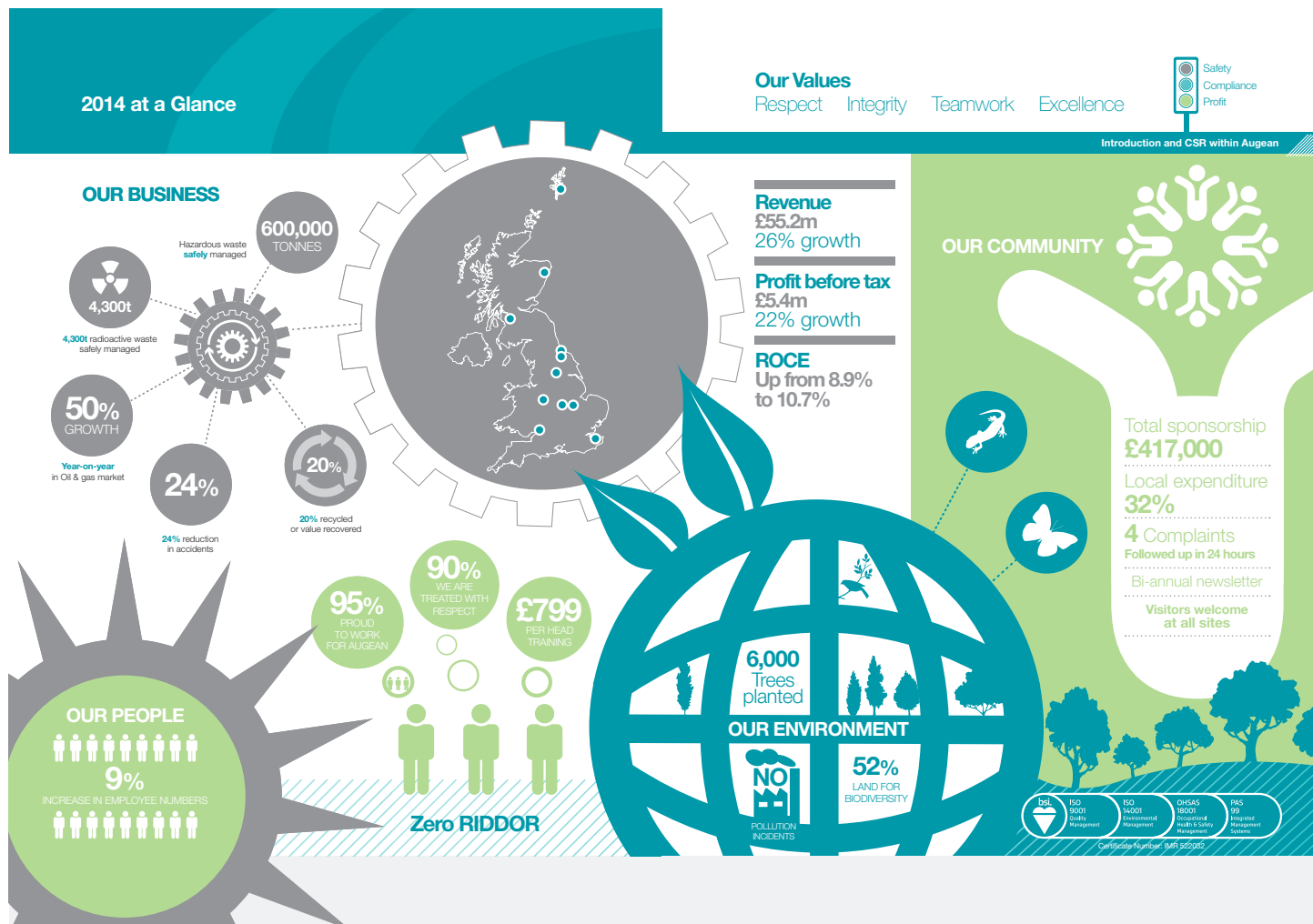
The East Northants Resource Management Facility is more than just a landfill. On October 17 2015 from 11 am to 3 pm come to our annual Open Day to see our nationally significant soil treatment plant and laboratory, as well as seeing how a modern, engineered landfill operates and is monitored.

The Augean Team will be available to explain the operation and engineering of the site and show you monitoring procedures and data. As part of their consultation on the Environmental Permit for Low Level Waste (LLW), waste industry regulators, the Environment Agency, will also be available to answer your questions.

For further information about the ENRMF Open Day or about Augean please visit www.augeanplc.com or email consultation@augeanplc.com or contact our telephone helpline on 01904 654989.

Corporate Social Responsibility Report 2014

The latest version of Augean's Corporate Social Responsibility (CSR) Report was published at the beginning of May. This document looks at all aspects of the company over the previous year, from the health and safety of our employees to protection of the environment. It evaluates where we have done well, where there is room for improvement and how that could be achieved. A snapshot of what we have achieved in 2014 is shown above/below. For the first time we have also compared our own CSR with that of 22 other CSR and Sustainability Reports of similar companies working in the same area; this has shown that Augean compares very favourably in terms of the ways we assess our performance and the level of transparency there is about the company.



Custom-made Mud Cutting Skips

Augean North Sea Services (ANSS) continues to invest in the oil and gas market by developing custom made mud skips with the help of Suretank.

The new mud cutting skips were tailor designed by Suretank to meet ANSS's strict operational requirements as well as industry standards. 250 of the new skips have been supplied as part of ANSS's continuing growth and long term commitment to deliver waste treatment services to the rigs and platforms in the North Sea which increases their fleet size to 750 units.



The full CSR Report for 2014 is available to read on our website, together with all previous CSR Reports since Augean began. Please go to www.augeanplc.com/csr.

Director Visits to All Sites

Strong internal communications ensures an effective and beneficial dialogue between an employer and its employees and is essential to reinforcing a Company's values and principles of operating. Augean ensures this communication through a wide range of measures to provide information on current Company developments, market news and the successes of our employees in the workplace and the wider community.

While there is effective communication between all levels of staff, we felt there is a need for stronger direct engagement to reinforce our values and ensure our key messages in health, safety and environment are received and understood by all our employees. To achieve this, every Director will visit at least one site every two months for the sole purpose of engaging directly with the workforce. Each visit will be formally recorded so that the results can be discussed and analysed to ensure their effectiveness going forward.

Health and Safety Targets On Track

At Augean the safety and well-being of our employees is never far from our minds. So we were very pleased that in 2014 there were no occasions when the Health and Safety Executive (HSE) needed to be informed under the Reporting of Injuries, Diseases and Dangerous Occurrences Regulations (RIDDOR) as any incident was too minor in nature. Indeed a wrist injury was the only occurrence of a Lost Time Incident; an HSE term to describe an injury that results in an employee being unable to fulfil their duty for a given period of time.

All our employees are encouraged to report any accident or injury in the workplace, no matter how small or trivial it would appear. 2014 once again saw a continuation of the year on year decrease in the number of incidents among our employees. Compared to 2013, the total number of incidents fell by 24 per cent and the number of actual injuries was reduced by 29 per cent. To prevent accidents, see how things could be done better and by taking corrective action, there is also a sustained high level of staff also reporting near misses and when safe acts, examples of good health and safety practice, occur.

The Augean Community Fund



Here are a selection of projects that have recently had funding approved from the Augean Community Fund.

Peterborough Lions Rugby Club

A grant of £30,000 has been awarded to the first phase of the redevelopment of the Peterborough Lions Rugby Club. This will contribute towards the start of a bigger project that will totally redevelop the club grounds, including a new stand and building with toilets facilities for the public and participants, showers, changing rooms, physiotherapy facilities and a permanent clubhouse.

St Leonard's Church, Apethorpe

Work has already begun on repairing the parapet of St Leonard's Church tower in Apethorpe, for which a grant of £25,000 was awarded. The grant will also be used to repair the beams and flooring of the top tower level which had rotted away.

Oundle Town Rowing Club

£19,181 has been awarded to Oundle Town Rowing Club to go towards the creation of a clubhouse with training and social space on a mezzanine storey within the shell of the existing boathouse. This will provide a sustainable and welcoming environment for the development of year-round sporting and recreational activities. The new facilities will also allow disabled and special needs users to participate throughout the year, who are currently restricted to good weather.

St John the Baptist Church, Harringworth

The building work needed to reconfigure the vestry of St John the Baptist Church in Harringworth will be funded by an award of £23,000. The external and internal wooden walls of the vestry will be altered to accommodate a separate disabled toilet, hand washing facilities and a separate servery to provide cupboard storage, washbasin/sink and refreshment facilities within the church.

Ufford Park Cricket Club

Areas like bowling greens and cricket wickets require the grass to be very finely mown, so an ordinary mower just won't cut it! The mower currently used by Ufford Park Cricket Club is nearly 25 years old and beyond economic repair or refurbishment. An award of £4,400 will enable the club to purchase a new specialised mower to get their cricket square just so...

Playground for Older Children, Duddington

Play equipment was installed in 2012 to cater to the needs of children from 0 to 6 years old in Duddington. £15,000 has now been awarded to provide for the growing need of activities for the older children in the 6 to 15 year old age group. This will include a small adventure course in the trees near the playground and an additional three pieces of play equipment.

Old Oundle Bowmen Archery Club

The archery club has moved to Angus Court Playing Field and will be renovating and improving the facilities that have fallen into disrepair with a grant of £3,200. Archery is also a very accessible sport for those with disabilities and the club is also hoping that improved disabled access will encourage increased membership and participation by this group.



About the Augean Community Fund

The Augean Community Fund helps community projects within a 10 mile radius of ENRMF in Northamptonshire and Thornhaugh Landfill near Peterborough. The fund is managed by Grantscape with qualifying projects decided by community volunteers on the Kings Cliffe Environmental Association (KCEA) and the Thornhaugh Environmental Association (TEA). If you have a community project why not talk to Grantscape to see if it could

qualify for support from the Augean Community Fund?

Please contact:

Andrew Budd, Grantscape, Office E,
Whitsundoles, Broughton Road, Salford,
Milton Keynes MK17 8BU
Email: andrew.budd@grantscape.org.uk
Tel: 01908 247638



Great Crested Newts Continuing to Thrive

The great crested newt reserve, an area of 1.5 hectares located at the Thornhaugh landfill site, has continued to go from strength to strength. Over the past three years Augean has carried out further enhancement of existing habitat and the creation of new habitat, including the planting of 6,000 trees last year. To make sure that the great crested newts are not affected by future operations at the site there is also an ongoing programme to translocate them from the site to the reserve.



Male Great Crested Newt

Saint Helena Delegation Visits ENRMF

Saint Helena, a British Overseas Territory in the South Atlantic, is a remote place, currently only accessible by boat, so the efficient management, minimisation and recycling of wastes is a key issue.

The island's Government is developing a Solid Waste Management Strategy to put into place the infrastructure, facilities, systems and procedures to provide a long-term solution. As part of developing this strategy, ENRMF hosted a delegation of visitors from Saint Helena, who had come to the site to draw on Augean's knowledge and experience in the waste industry.

The redevelopment of the Horse Point Landfill Site on Saint Helena forms a major part of the island's waste strategy; in particular recovering more material through recycling so that it is used more efficiently as a resource. Efficient recycling and reuse of construction waste together with a well-run landfill will also help in the nearby development of an airport for the island; a crucial economic aspiration for Saint Helena, in particular to develop tourism.

To report any concerns regarding our sites or to arrange for a site visit so that you can see our operations first-hand, please contact the relevant site manager.

Aberdeen – Simon Gibb
Tel: 01224 719200

Avonmouth – Tim Young
Tel: 0117 9820303

Cannock – James Cooper
Tel: 01543 468832

East Kent – Andy Scorer
Tel: 01304 450010

ENRMF / Thornhaugh – Simon Moyle
Tel: 01780 444900

Paisley – Gary Richards
Tel: 0141 8875689

Port Clarence Landfill – Terry Blachard
Tel: 01642 546836

Waste Recovery Park, Port Clarence – Paul Lealman
Tel: 01642 546836

All sites can be contacted by email at:
info@augeanplc.com



AIS Going from Strength to Strength

Augean Integrated Services (AIS) was established to cater to the needs of customers who need a wider range of waste services other than just the handling of waste. This growing customer base is typically medium to large manufacturers who want to improve the rate of recycling and reuse at their sites. AIS operates out of Augean's Cannock site, which is also a transfer station capable of accepting mixed loads and the segregation and storage of these containers. From here wastes can be sent on to other Augean facilities for further treatment or disposal, such as the High Temperature Incinerator located at East Kent, near Sandwich, which burns wastes at temperatures up to 12,000 C. These can include pharmaceutical and medical waste and other wastes where complete destruction needs to be ensured.